

cie. toula limnaios

TECHNICAL REQUIREMENTS

jeux



This document is intended as a guideline for festivals, programmers and technical directors. It helps to determine the outfit which must be provided for the performance of "jeux". Necessary modifications and adaptations will be discussed in due time with the company's technical director. Please read this document carefully and check if these requirements can be met. If you have any questions or are uncertain, please don't hesitate to contact us. So far, we have always found a solution!

HOW TO CONTACT US

Company/Shipping Address

cie. toula limnaios GmbH

Eberswalder Str. 10

10437 Berlin

Germany

Composer/Management

Ralf Ollertz

Tel: +49 170 44 25 544 (WhatsApp)

ralf_ollertz@toula.de

Touring/Cooperations

Marie Schmieder

Tel: +49 174 317 08 60 (WhatsApp/Telegram)

marie_schmieder@toula.de

Technical Director

Felix Grimm

Mobile: +49 172 169 35 36 (WhatsApp/Telegram)

felix_grimm@toula.de

OVERVIEW

- Production for 7 Dancers
- Duration: 60 Minutes

DRESSING ROOMS

At least two large dressing rooms are required which must be cleaned daily. Above that, please provide:

- 14 clean towels
- showers with hot and cold water
- refreshments and drinks (bottled water, snacks, fruit etc.)

STAGE & SCENERY

MINIMUM SIZE:

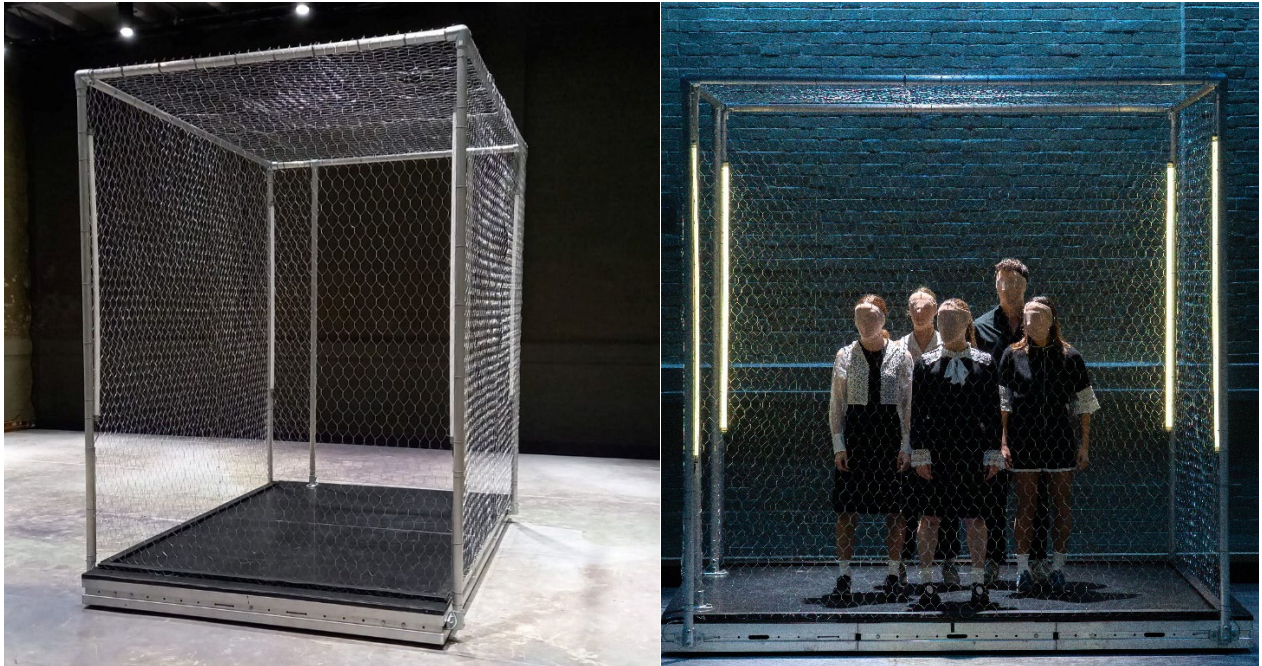
- Width: 10m
- Depth: 13m
- Grid trim height: 6m

- The stage may not be tilted in any way. The stage floor must be free from dents or cracks.
- The floor must be cleaned before each rehearsal and performance.
- The presenter provides high quality images of the venue (stage, stage walls, auditorium, FOH) upon confirmation of the performance.
- There are no hazardous actions, no fire, no smoke and no haze in this production

Floor

The company will bring a custom floor which measures 10x13m. It is a standard Gerriets Vario in 200cm width which has been painted. We will also provide suitable tape.

Rolling Cage



- Main scenographic element is a rolling cage. It consists of three combined risers made out of a HOAC system. If your venue can provide a HOAC-system rolling riser 200x300cm (or three pieces 100x200cm) with four turtle casters, we can reduce logistics handling and cost.
- The extensions of the cage are constructed from standard aluminium pipe with light metal fencing wrapped around.

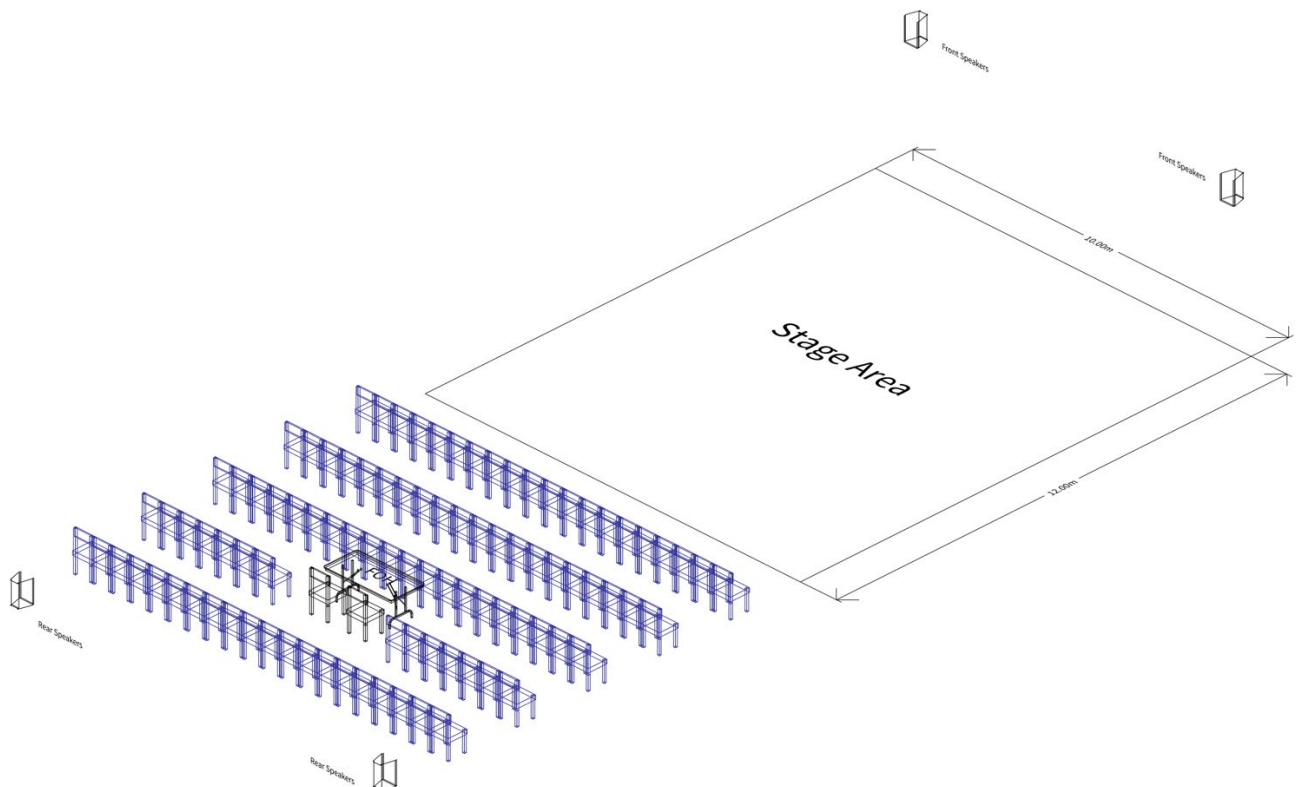
- The cage is fitted with an LED-Tube in each corner, battery pack and wireless DMX-receiver mounted underneath.
- For setup we require the following equipment:
 - two short ladders for a working height of about 300cm.
 - a toolkit including two wire cutters
 - electric screw driver/drill

Backdrop

The original production features a black stage mesh/gauze in front of the rear wall. For touring we consider a cyclorama/opera with a stage mesh/gauze in front of it. We will choose the backdrop depending on the venue, so please make sure to provide some high resolution photos of the venue as requested above.

SOUND

- The music is a quadrophonic composition; thus, we need speakers installed behind the audience.
- Speaker placement is very important for us. There must be at least four discreet channels provided. Front speakers should be placed at the far rear end of the stage. Please see the drawing below for a schematic view of our usual setup.
- We require the FOH to be inside the auditorium, not in the control booth or in any other way acoustically impaired to allow proper mixing of the quadrophonic sound.
- We are using Qlab for audio playback which can be connected by our own audio interface or via USB if your mixing desk has an on-board audio interface.



The presenter provides

- a powerful PA system suitable to their location
- additional rear speakers, if not already installed
- a mixing desk with at least 6 inputs and 6 discreet outputs
- 1 wireless microphone, hand held

LIGHT

- See the lighting plot at the end of this document for original setup.
- All equipment must comply with local and common-sense safety standards, all hanging fixtures must be secured by a steel wire.
- We travel with our own lighting control, an ETC EOS Nomad System but we will gladly use any EOS-based console with recent software (EOS 3.0 upwards). We require 5-pin DMX connections at the FOH position or a network connection to your sACN or ArtNet node.
- We can control a maximum of four DMX universes. Please make sure your entire rig, including house lights, can be controlled from within that boundary.
- **The lighting design is LED only but we are aware that we cannot expect every venue to be equipped with all the fixtures we require. A detailed adaptation of the design will be provided based on the local possibilities, especially for the pixel mapped 5x6 top light. Please keep in mind that the best “look” for the performance of “jeux” can be achieved with the equipment mentioned below.**
- For any substitute fixtures please make sure to provide exact type, personality and patch.

LED fixtures used in original production:

- 35x Chauvet Professional E2 FC LED Ellipsoidal (RGBAL color mixing, 25°-50° Zoom)
- 5x Elation KL PAR FC (RGBAL spotlight with interchangeable diffusers VN5P > WFL)
- 6x Robe Robin LEDBeam 350 (RGBW moving head wash, 5°-50° Zoom)
- 4x Robe Robin LEDBeam 150 (RGBW moving head wash, 5°-50° Zoom)
- 10x Ovation CYC-1 FC (RGBAL cyclorama light)
- 2x Aputure Nova 300p (RGBW flood light)
 - For the Nova 300p please provide pipes, steel wire and wire holders to drop to ca. 400cm above stage level

PERSONELL & SCHEDULE

Setup will require one full day, performances in the evening after load-in are not possible.

- during setup we require 2 lighting technicians, 1 sound engineer and 1 stage technician / carpenter
- during shows we require 1 lighting technician

AN EXEMPLARIC SCHEDULE **MAY** LOOK LIKE THIS:

Day 1 – Setup

10:00 – 13:00: setup stage & scenography
13:00 – 14:00: break
14:00 – 18:00: continue scenography, lighting setup
18:00 – 18:30: break
18:30 – 20:00: focus

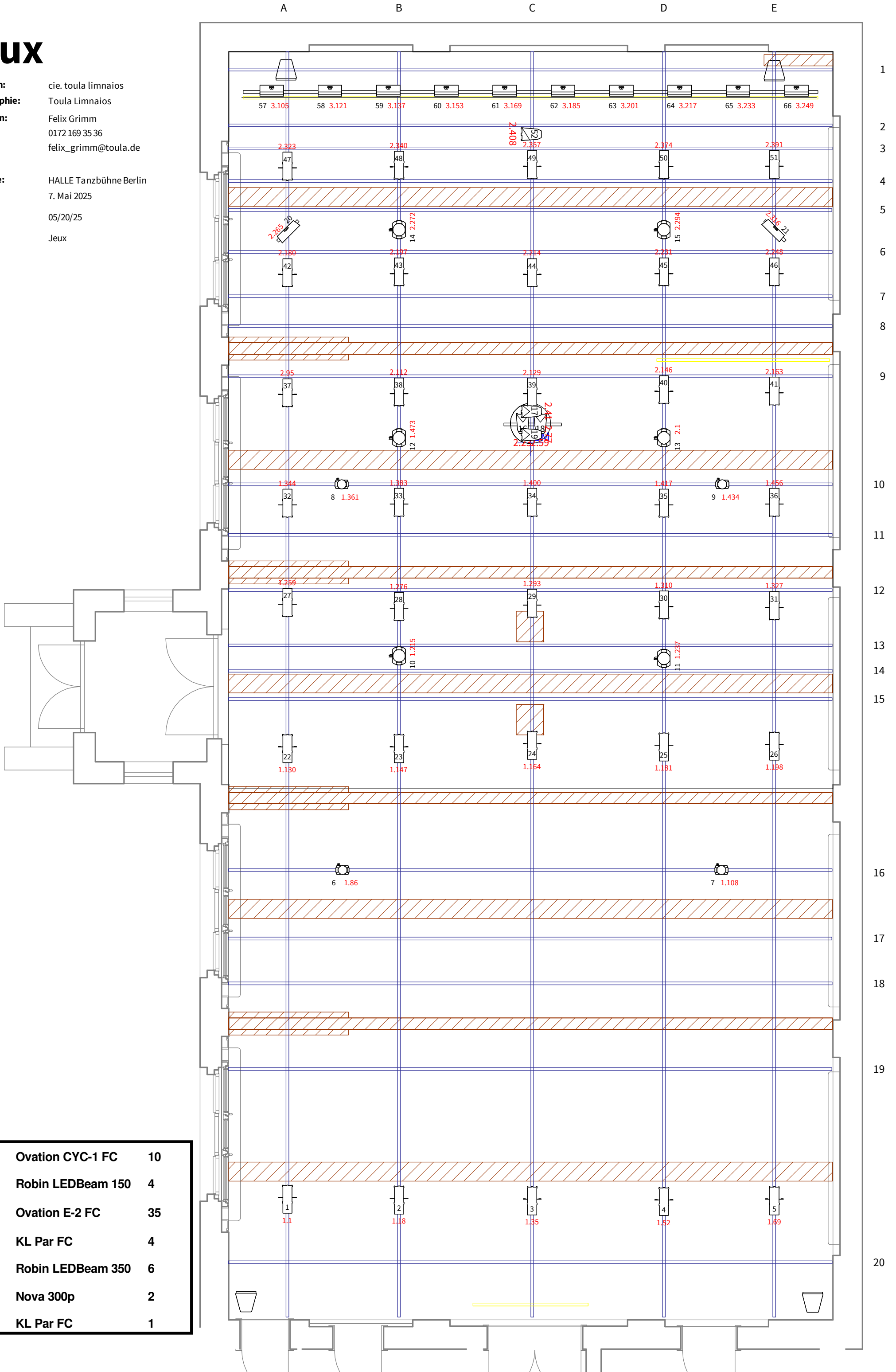
Day 2 – Corrections & Performance

11:00 – 13:00: finish focus
13:00 – 14:00: break
14:00 – 16:00: sound check & touch up
16:00 – 17:00: arrival of dancers on stage, warm up
17:00 – 18:00: rehearsals & corrections
18:00 – 19:00: break
20:00 – 21:00: performance

Jeux

Produktion: cie. toula limnaios
Choreographie: Toula Limnaios
Lichtdesign: Felix Grimm
 0172 169 35 36
 felix_grimm@toula.de

Spielstätte: HALLE Tanzbühne Berlin
Premiere: 7. Mai 2025
Gedruckt: 05/20/25
Datei: Jeux



	Ovation CYC-1 FC	10
	Robin LEDBeam 150	4
	Ovation E-2 FC	35
	KL Par FC	4
	Robin LEDBeam 350	6
	Nova 300p	2
	KL Par FC	1