

cie. toula limnaios

TECHNICAL REQUIREMENTS

la nef des fols



This document is intended as a guideline for festivals, programmers and technical directors. It helps to determine the outfit which must be provided for the performance of “la nef des fols”. Necessary modifications and adaptations will be discussed in due time with the company’s technical director. Please read this document carefully and check if these requirements can be met. If you have any questions or are uncertain, please don’t hesitate to contact us. So far, we have always found a solution!

HOW TO CONTACT US

Company/Shipping Address

cie. toula limnaios GmbH

Eberswalder Str. 10

10437 Berlin

Germany

Touring/Cooperations

Marie Schmieder

Tel: +49 174 317 08 60 (WhatsApp/Telegram)

marie_schmieder@toula.de

Composer/Management

Ralf Ollertz

Tel: +49 170 44 25 544 (WhatsApp)

ralf_ollertz@toula.de

Technical Director

Felix Grimm

Mobile: +49 172 169 35 36 (WhatsApp/Telegram)

felix_grimm@toula.de

OVERVIEW

- Production for 8 Dancers
- Duration: 60 Minutes
- Full video of performance: <https://toula.de/en/la-nef-des-fols-video/>

DRESSING ROOMS

At least two large dressing rooms are required which must be cleaned daily. Above that, please provide:

- 16 clean towels
- showers with hot and cold water
- refreshments and drinks (bottled water, snacks etc.)

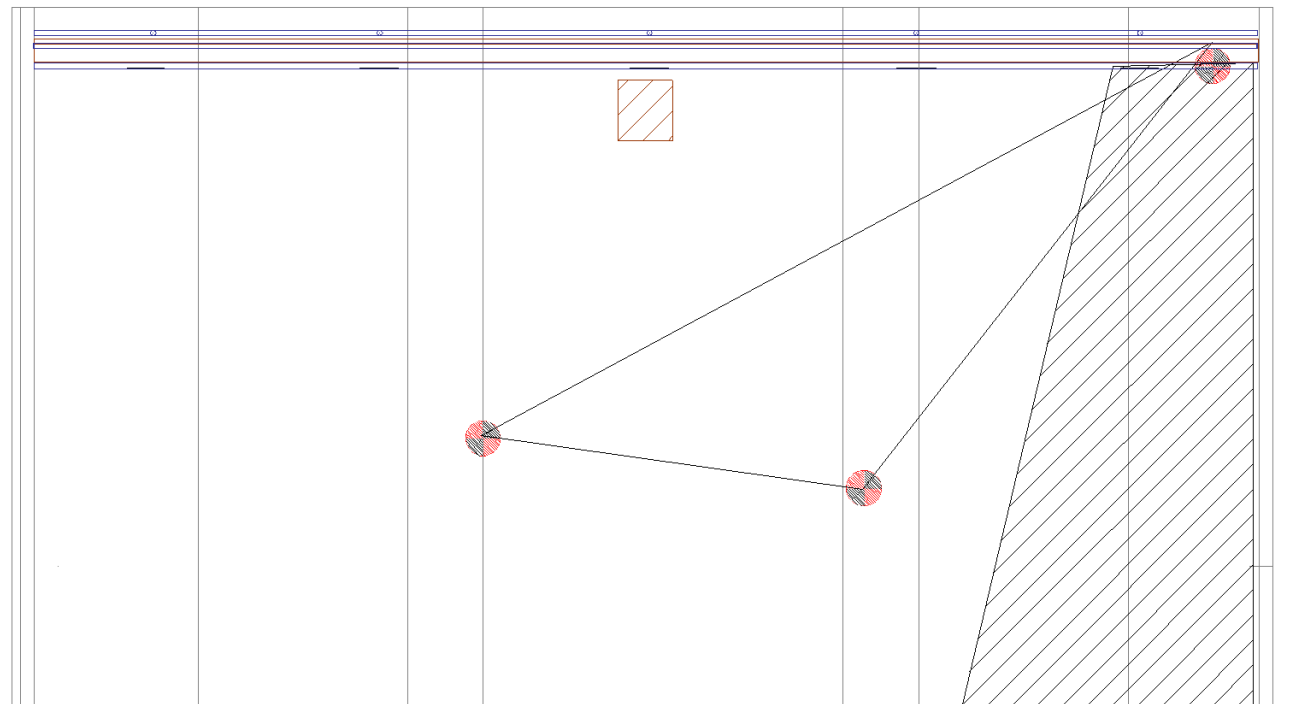
STAGE & SCENERY

MINIMUM SIZE:

- Width: 10m
 - Depth: 12m
 - Grid trim height: 6m
-
- The stage may not be tilted in any way. The stage floor must be free from dents or cracks.
 - The entire floor must be covered with clean black marley (vinyl dance floor).
 - The floor must be cleaned before each rehearsal and performance.

Sails

The scenography consists of two large sails on the right side of the stage. The anterior sail is plainly hanging straight down, the posterior sail is mounted at two points in the back wall of the stage, the third point just behind the hanging sail in the rig. Dancers will move on and around this sail, bearing no more than 150kg. Placement of the rigging points will be discussed and planned according to the spatial possibilities of the venue.

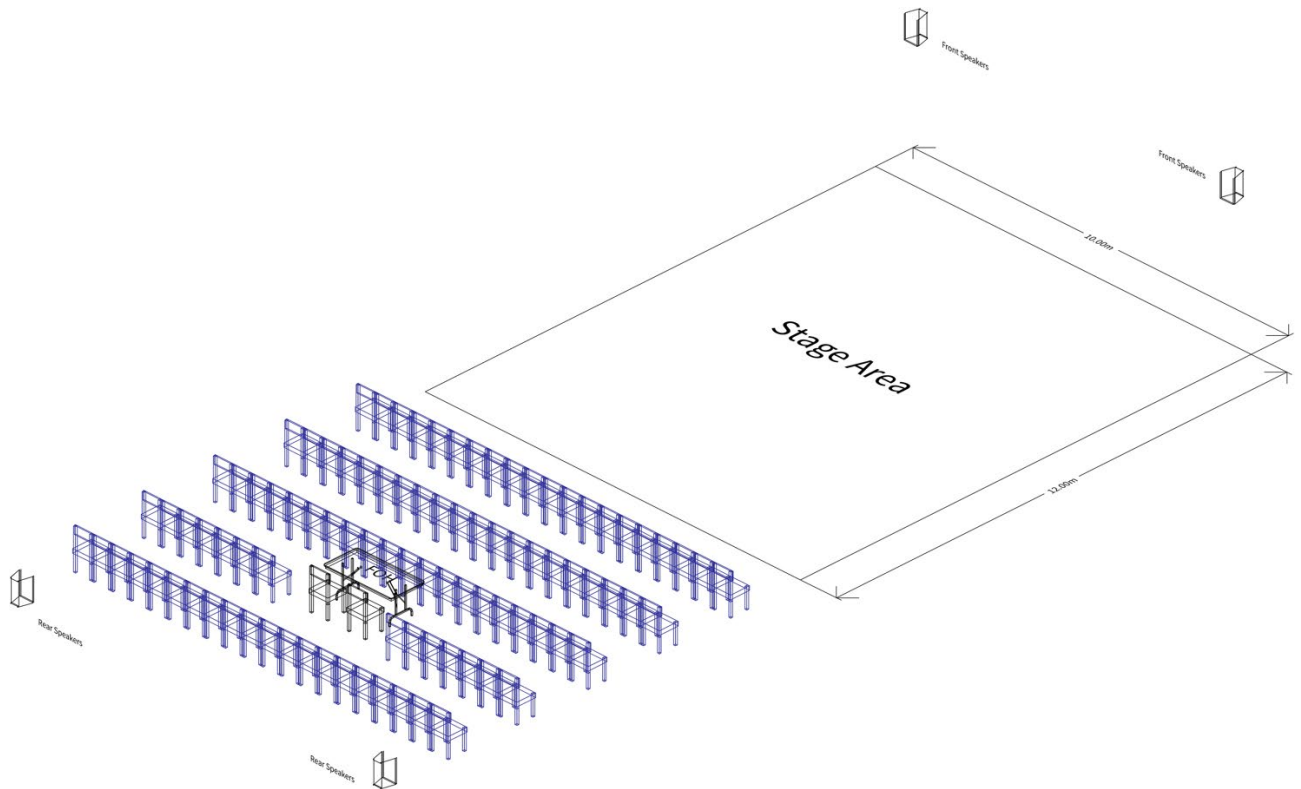


Haze & Smoke

The production utilizes a hazer and a battery powered smoke machine. In a few scenes, the smoke becomes quite heavy. Please make sure to switch off any smoke alarms during rehearsals and performances. The presenter provides a hazer suitable to the venues size and a battery powered smoke machine (i.e. Look Solutions Tiny).

SOUND

- The music is a quadrophonic composition; thus, we need speakers installed behind the audience.
- Speaker placement is very important for us. There must be at least four discreet channels provided. Front speakers should be placed at the far rear end of the stage. Please see the drawing below for a schematic view of our usual setup.
- We require the FOH to be inside the auditorium, not in the control booth or in any other way acoustically impaired to allow proper mixing of the quadrophonic sound.
- We are using Qlab for audio playback which can be connected by our own audio interface or via USB if your mixing desk has an on-board audio interface.



The presenter provides

- a powerful PA system suitable to their location
- additional rear speakers, if not already installed
- a mixing desk with at least 6 inputs and 6 discreet outputs

LIGHT

- See the lighting plot at the end of this document for original setup.
- The lighting design will be adapted to the venue. In most “full size” theatres with fixed lighting positions, the designs can easily be adapted with minor changes to the rig. Detailed planning will be provided before load-in.
- All equipment must comply with local and common-sense safety standards, all fixtures in the roof must be secured by a steel wire.
- We travel with our own lighting control, an ETC EOS Nomad System but we will gladly use any EOS-based console with recent software (EOS 3.0 upwards). We require 5-pin DMX connections at the FOH position or a network connection to your sACN or ArtNet node.
- We can control a maximum of four DMX universes. Please make sure your entire rig, including house lights, can be controlled from within that boundary.
- **The lighting design is LED only but we are aware that we cannot expect every venue to be equipped with all the fixtures we require. A detailed adaptation of the design will be provided based on the local possibilities. Please keep in mind that the best “look” for the performance of “la nef des fols” can be achieved with the equipment mentioned below.**
- For any substitute fixtures please make sure to provide exact type, personality and patch.
- The company will provide one 10m long LED-tube to be mounted under the rig.

LED fixtures used in original production:

- 28x Chauvet Professional E2 FC LED Ellipsoidal (RGBAL color mixing, 25°-50° Zoom)
- 2x Gobo holder for E2 FC
- 9x Elation KL PAR FC (RGBAL spotlight with interchangeable diffusors VNSP > WFL)
- 6x Robe Robin LEDBeam 350 (RGBW moving head wash, 5°-50° Zoom)
- 4x Robe Robin LEDBeam 150 (RGBW moving head wash, 5°-50° Zoom)
- 5x Ovation CYC-1 FC (RGBAL cyclorama light)
- 4x floor stand low

PERSONELL & SCHEDULE

Setup will require one full day, performances in the evening after load-in are not possible.

- during setup we require 2 lighting technicians, 1 sound engineer and 1 stage technician / carpenter
- during shows we require 1 lighting technician

AN EXEMPLARIC SCHEDULE **MAY** LOOK LIKE THIS:

Day 1 – Setup

10:00 – 13:00: setup stage

13:00 – 14:00: break

14:00 – 18:00: lighting setup

18:00 – 18:30: break

18:30 – 20:00: focus

Day 2 – Corrections & Performance

11:00 – 13:00: finish focus

13:00 – 14:00: break

14:00 – 16:00: sound check & touch up

16:00 – 17:00: arrival of dancers on stage, warm up

17:00 – 18:00: rehearsals & corrections

18:00 – 19:00: break

20:00 – 21:00: performance

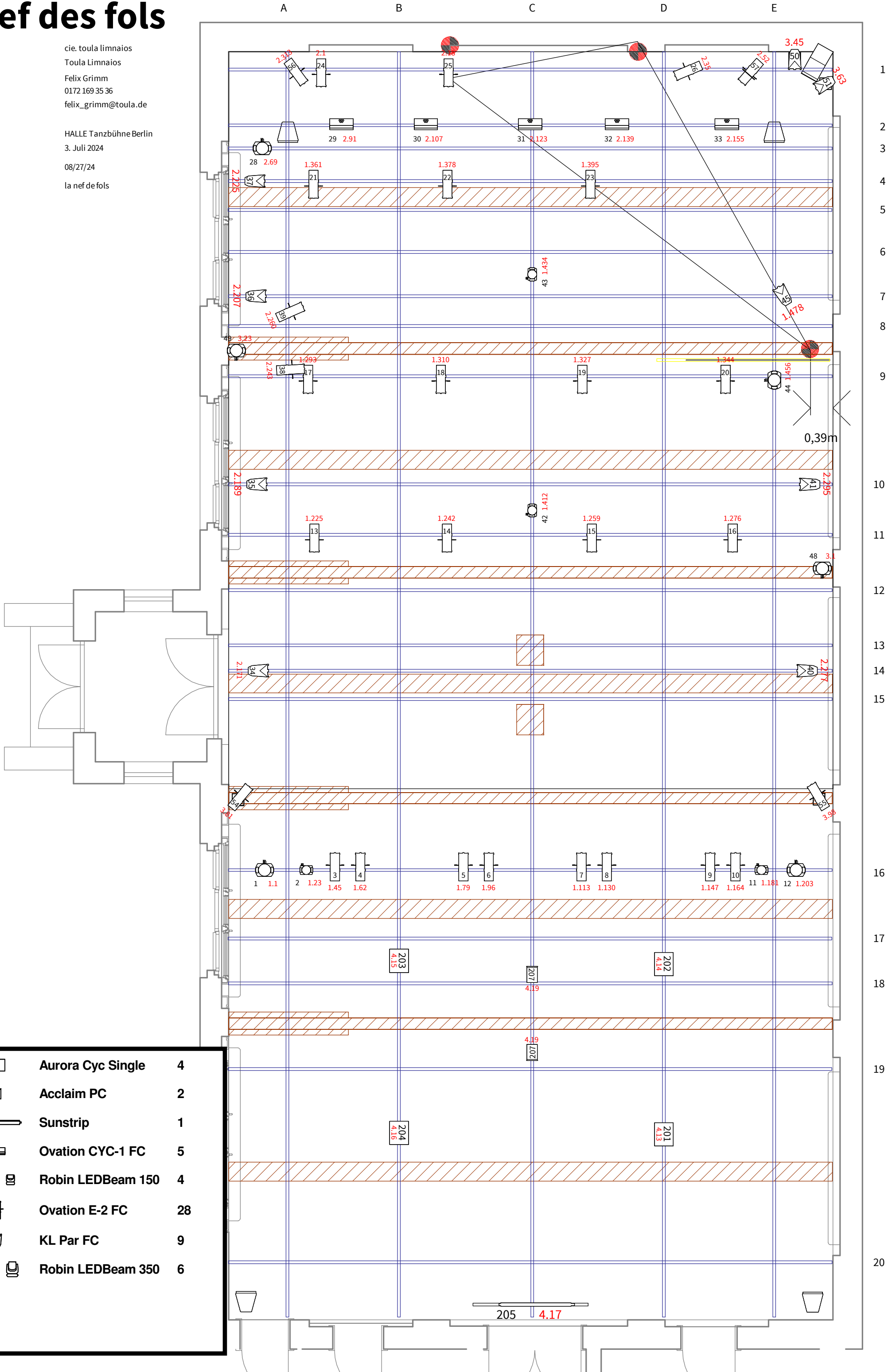
la nef des fols

Produktion: cie. toula limnaios
Choreographie: Toula Limnaios
Lichtdesign: Felix Grimm
 0172 169 35 36
 felix_grimm@toula.de

Spielstätte: HALLE Tanzbühne Berlin
Premiere: 3. Juli 2024

Gedruckt: 08/27/24

Datei la nef de fols



	Aurora Cyc Single	4
	Acclaim PC	2
	Sunstrip	1
	Ovation CYC-1 FC	5
	Robin LEDBeam 150	4
	Ovation E-2 FC	28
	KL Par FC	9
	Robin LEDBeam 350	6